



**VeriShield™
Modular Radiation
Shielding**



Advancing modular technology to provide the best way of delivering treatment rooms

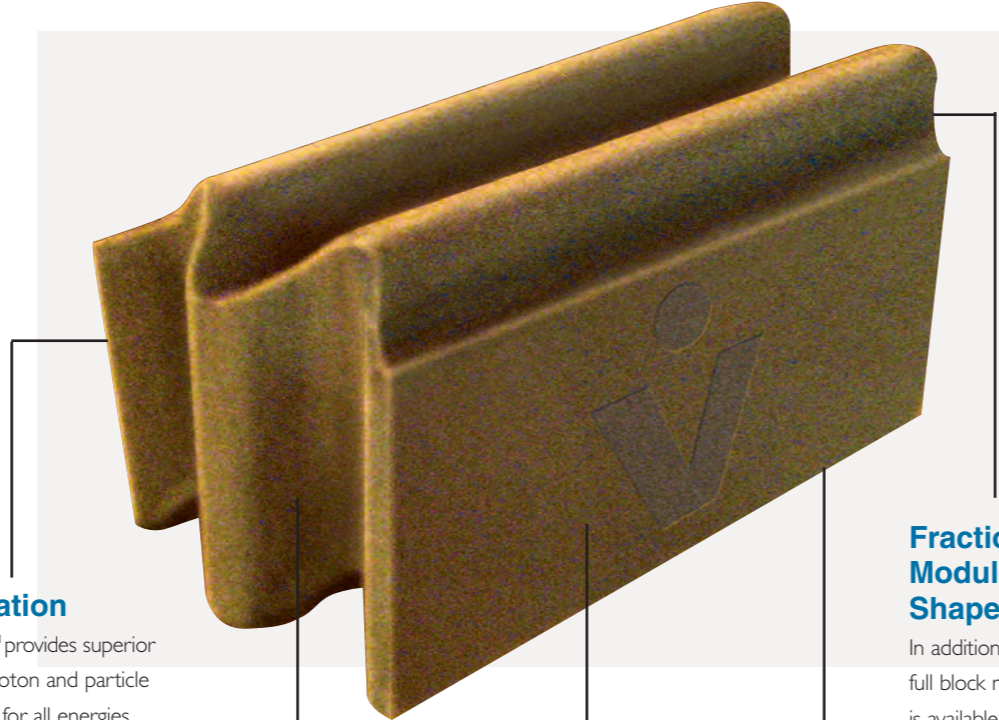


VeriShield™ modules are dry stacked blocks that are easily configured into any size or shape therapy room. Individual shielding requirements are met by tailoring the density and number of layers of VeriShield as needed. Shielding is easily installed, in even the most confined work site, and can be upgraded, reconfigured or removed if needed.

Compared to concrete, rooms constructed with VeriShield require less than half the space, and there is no penetration required of the space above the room. Modules are easily transported to the worksite and can be stored indoors or out, as they are unaffected by weather. Their compact size allows for convenient delivery with fast and easy installation without disrupting surrounding services.

No other shielding method provides a comparable blend of performance, convenience and affordability.

VeriShield™ construction allows for unmatched flexibility in designing details to accommodate virtually any installation. The VeriShield modules and shapes can be configured to produce the very best in shielding strength and effectiveness.



Attenuation

VeriShield™ provides superior neutron, photon and particle attenuation for all energies.

The groundbreaking interlocking curved ridges of VeriShield introduce an extra measure of radiation protection. By eliminating any chance of straight line passage of radiation between the modules, VeriShield provides enhanced attenuation levels - **by a factor of two times at the joints** - unmatched by other existing shielding methods. The increased density of the modules also adds to VeriShield's superior attenuation curves.

Density

VeriShield™ 250 features a density of 250 lbs/ft³ (4 g/cm³), and a density of 313 lbs/ft³ (5 g/cm³) for VeriShield™ 300.

Interlocking Ridges

The smoothly curved faces of the VeriShield™ modules provide a tight fit between individual pieces (top to bottom and on both ends), interlocking them tightly together. Half size pieces and shapes also mate securely together for a solid installation.

Fractional Modules and Shapes

In addition to the standard full block modules, VeriShield™ is available in half length and half thickness pieces along with a series of complimentary shapes which provide a cleaner installation with minimal cutting.

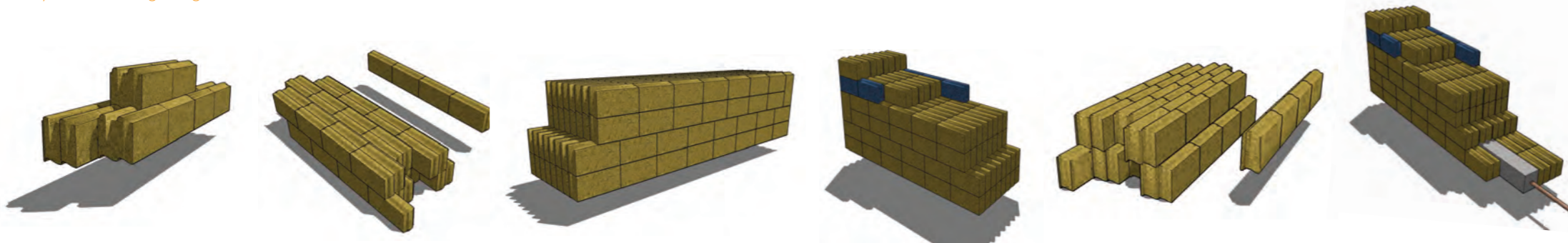
Size

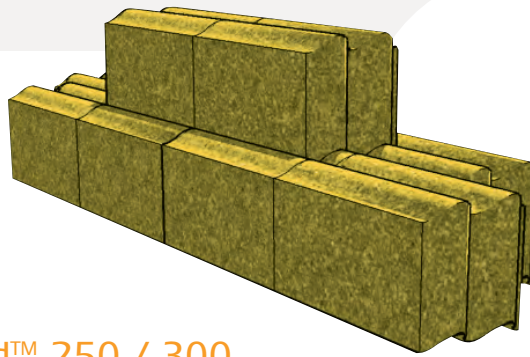
Standard VeriShield™ modules are 5" x 5" x 10" (127mm x 127mm x 254mm). Their compact size allows for easier handling during installation, along with increased worker safety and a dramatic reduction in per-block install times.

VeriShield™ 250 and 300

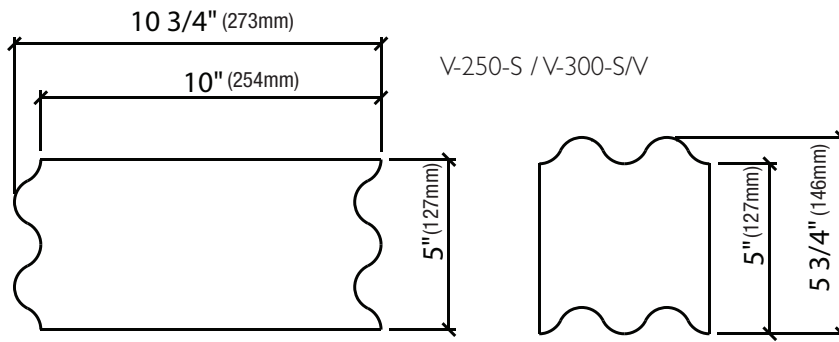
TYPE		FACE LENGTH		FACE HEIGHT		THICKNESS		DENSITY	
MODEL NO.	DESCRIPTION	in.	mm	in.	mm	in.	mm	lbs/cf	g/cm ³
V-250-S	STANDARD	10	254	5	127	5	127	250	4.0
V-300-S								313	5.0
V-250-HT	HALF THK	10	254	5	127	2.5	63.5	250	4.0
V-300-HT								313	5.0
V-250-HL	HALF LENGTH	5	127	5	127	5	127	250	4.0
V-300-HL								313	5.0
V-250-HH	HALF HT.	10	254	2.5	63.5	5	127	250	4.0
V-300-HH								313	5.0
V-250-FMT	FLAT MALE TOP	10	254	5	127	5	127	250	4.0
V-300-FMT								313	5.0
V-250-FFB	FLAT FEMALE BOTTOM	10	254	5	127	5	127	250	4.0
V-300-FFB								313	5.0
V-250-FME	FLAT MALE END	10	254	5	127	5	127	250	4.0
V-300-FME								313	5.0
V-250-FFE	FLAT FEMALE END	10	254	5	127	5	127	250	4.0
V-300-FFE								313	5.0

The unique attenuation characteristics of lead-free VeriShield™ modular shielding far surpass the effectiveness of concrete, and greatly outperform competitive shielding products and systems. Contact Vertis for TVL information.





VeriShield™ 250 / 300



Fractional Modules and Shapes

	V-250-HL / V-300-HL
	V-250-HT / V-300-HT
	V-250-HH / V-300-HH
	V-250-FFE / V-300-FFE
	V-250-FME / V-300-FME
	V-250-FMT / V-300-FMT
	V-250-FFB / V-300-FFB

Focused on innovative modular designs, products and services, Veritas Medical Solutions provides all the pieces necessary for delivering a rapidly constructed turnkey therapy room installation. VeriShield™ modular shielding is the keystone in constructing your next therapy suite.

*The Single Source
for high quality,
cost-effective and
fully-functional
therapy centers.*

5 Great Valley Parkway, Suite 210, Malvern, PA 19355
888-242-6760



veritas-medicalsolutions.com

veritas