

# ShieldTech™ Door Systems

## Standard Surface Finishes



All ShieldTech Door Systems are provided with a choice of solid surface faux wood grain, metal veneer and HPL finishes. Make your selection from these standard surface finishes and indicate your first and second choices\*. Samples are available upon request.

A range of optional finishes are available at an additional charge. Contact your Veritas representative for details.

First Choice \_\_\_\_\_

Second Choice \_\_\_\_\_

### Woodgrains



Beigewood

Kensington Maple

Moticello Maple

River Cherry

Amber Cherry

Wild Cherry

Versailles Anigre

### Metals



Brushed Gold

Oxide

Antique Brush

Random Swirl

Matte Natural Aluminum

Pearl

Alumasteel

### Colors



Beige Pampas

Almond Leather

Natural Tigris

Evening Tigris

Maroocht Brush

Woolamai Brush

Green Tigris

\* Not all selections are available at time of order; and/or finishes may be discontinued without notice.

5 Great Valley Parkway, Suite 210, Malvern, PA 19355  
888-242-6760 [www.Veritas-MedicalSolutions.com](http://www.Veritas-MedicalSolutions.com)



**ShieldTech™ Door Systems**  
*Grid Patterns and Edge Finishes*

All ShieldTech Door Systems are provided with a choice of surface joint types and joint patterns. Make your selection from these standard edges and patterns.

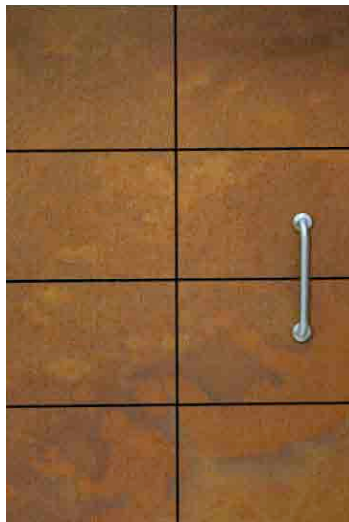


Illustrated is Even Grid Pattern with Hidden Reveal joints.

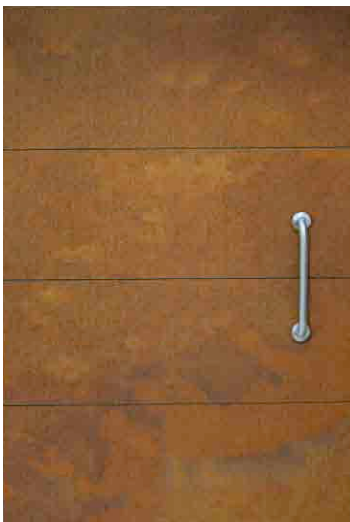
**Joint Patterns**



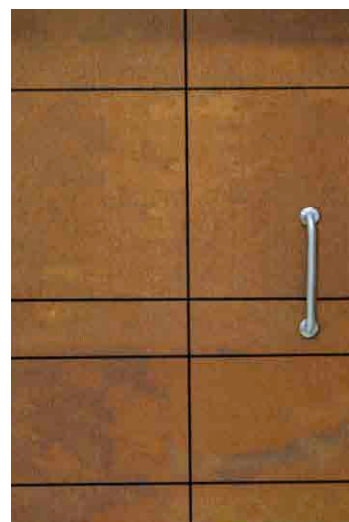
No Grid



Even Grid



Horizontal Grid



Tartan Grid

**Joint Types**



Hidden Reveal



Narrow Reveal

