

Veritas SmartDoor® Selected for Massive Proton Beam Centre



University College London Hospitals
NHS Foundation Trust

PROJECT

University College London Hospital
Proton Beam Therapy Centre

LOCATION

London, UK

GC/PROJECT MANAGER

Bouygues UK

VERITAS SCOPE OF WORK

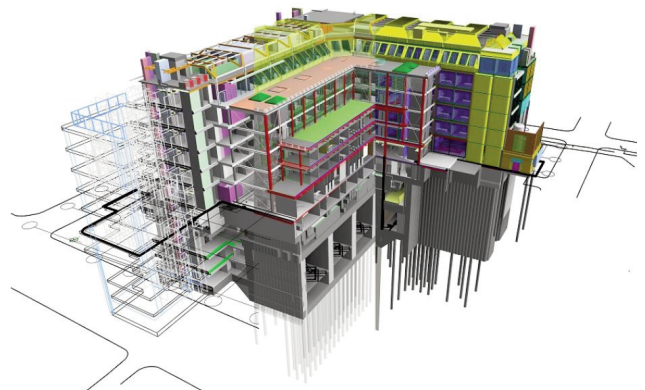
Bi-parting Veritas SmartDoor® Proton Door
System and Supplemental Radiation Shielding

SITE LOCATION

Underground in Gigantic 5-Story Basement

COMPLETED

2019





Based in the lower ground floors of a state-of-the-art building, the UCLH Proton Beam Therapy Centre is one of only two high energy PBT NHS centres in the UK. Veritas was contracted to design, build and install a shielded door for the protection of patients and staff. The unique single-slide Veritas SmartDoor® was lowered into its concrete enclosure by a 750-tonne mobile crane and had to be organised so as to disrupt the other activities on the site as little as possible. The 113,000 kg door system will shield the entrance to the cyclotron, which the staff at UCLH voted to name Lise, after renowned 20th-century nuclear physicist Lise Meitner, best known for her role in the discovery of nuclear fission.

To learn more about how Veritas Medical Solutions can benefit your next project, contact us at info@veritas-medicalsolutions.com